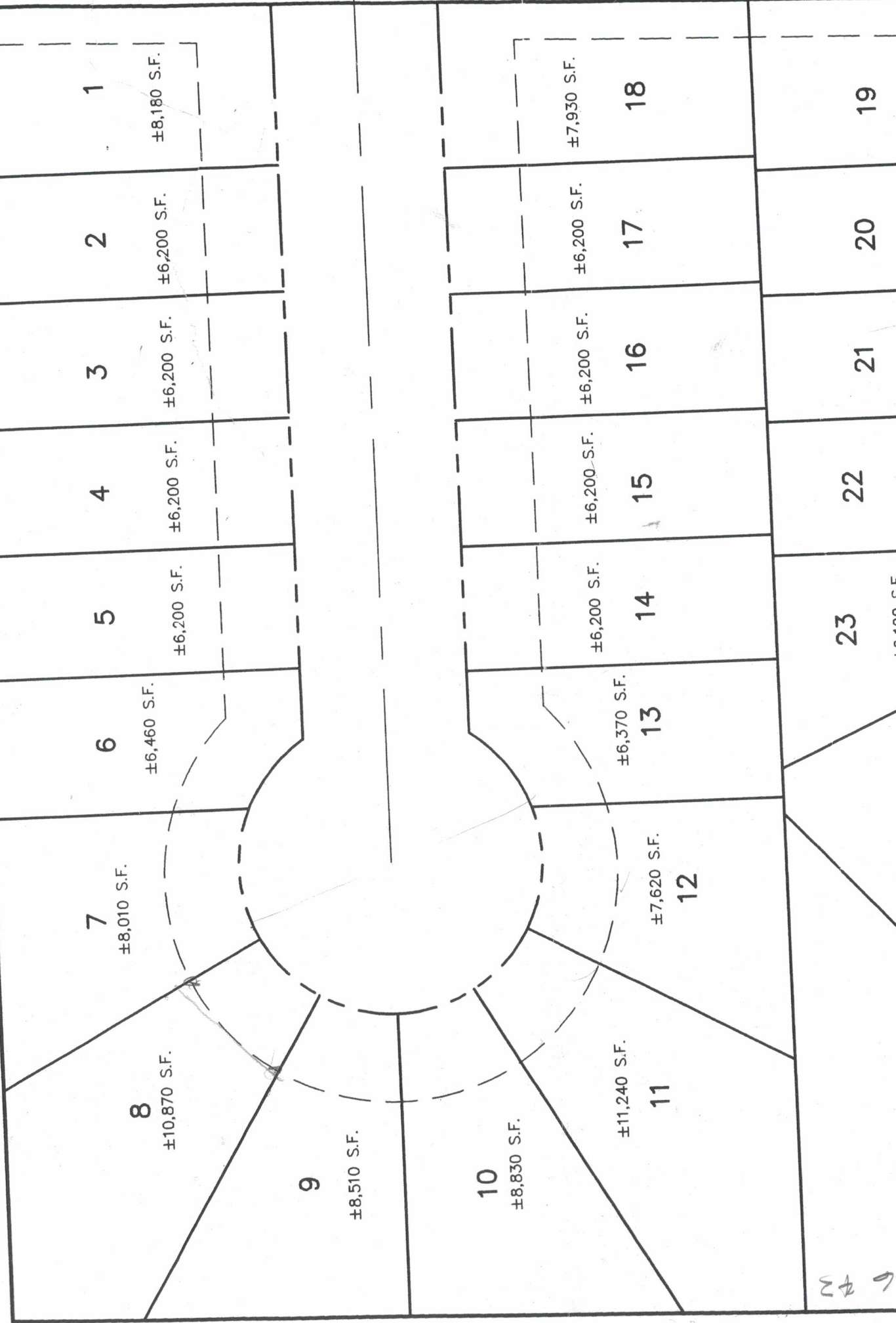


20
A

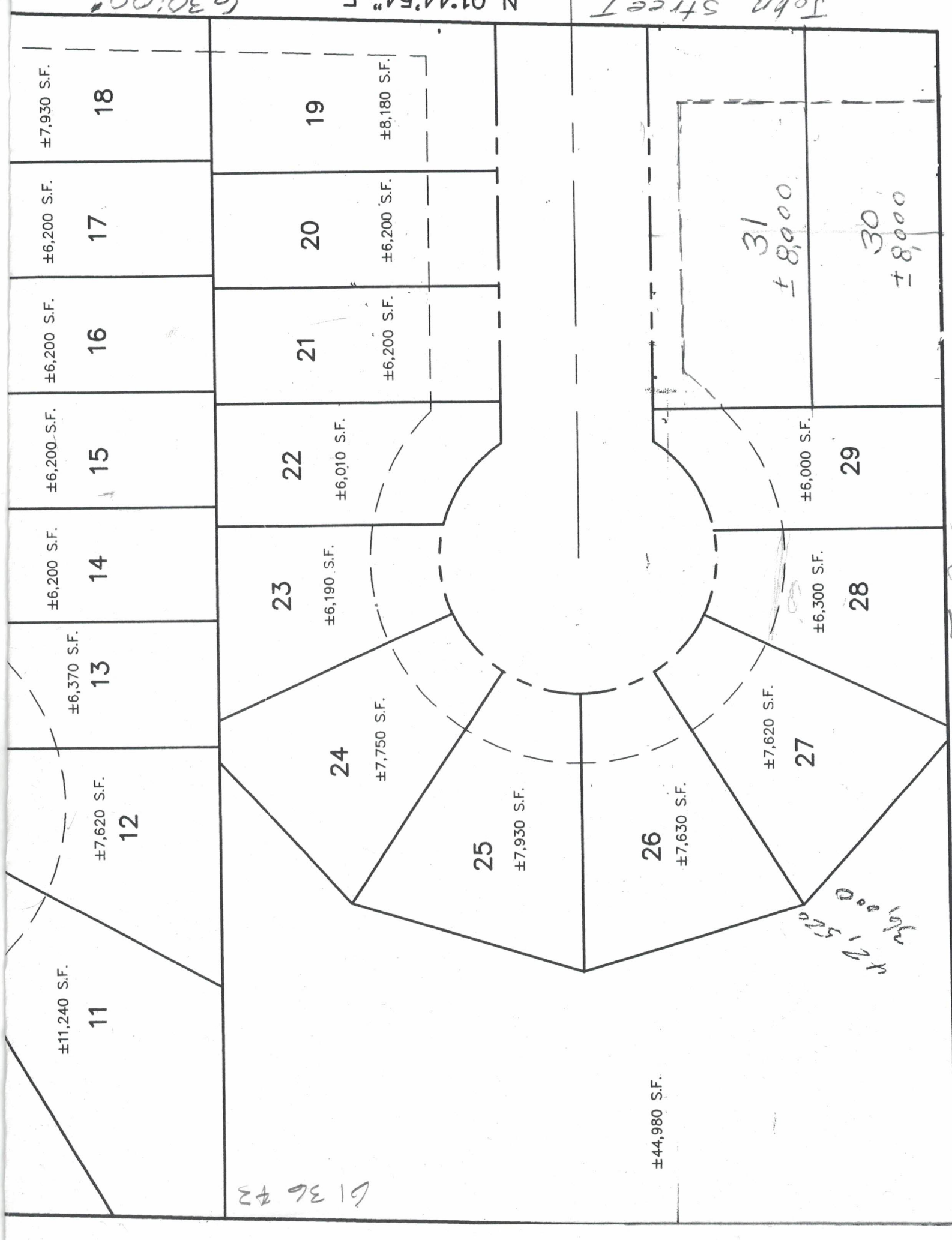
630:00

522.00'

S 89°59'48" E



630:00



±11,240 S.F.

11

±7,620 S.F.

12

±6,370 S.F.

13

±6,200 S.F.

14

±6,200 S.F.

15

±6,200 S.F.

16

±6,200 S.F.

17

±7,930 S.F.

18

±7,750 S.F.

24

±6,190 S.F.

23

±6,010 S.F.

22

±6,200 S.F.

21

±6,200 S.F.

20

±8,180 S.F.

19

±7,930 S.F.

25

±7,620 S.F.

27

±6,300 S.F.

28

±6,000 S.F.

29

±7,630 S.F.

26

±44,980 S.F.

31
±8,000

30
±8,000

John Street

6136 #3

17,520 sq ft