

DOOR SCHEDULE							
TAG	QTY	SIZE	DOOR TYPE	LOCKSET	DOOR CLOSER	WINDOW	NOTES
1	4	3' x 7'	STEEL MAN DOOR	PANIC W/ ENTRANCE	YES	NO	
2	4	3' x 7'	STEEL MAN DOOR	ENTRANCE	NO	NO	
3	2	3' x 7'	STEEL MAN DOOR	PANIC HARDWARE	NO	NO	
4	1	4' x 7'	STEEL MAN DOOR	ENTRANCE	NO	NO	
5	3	3' x 7'	STEEL MAN DOOR	PANIC HARDWARE	YES	NO	

WALL SCHEDULE						
TAG	QTY	SIZE	EXTERIOR PANEL TYPE	INSULATION	INTERIOR PANELING	NOTES
A	31	132" x 132"	14GA EG STEEL WALL	3" (R-21) POLYURETHANE FOAM	.040 UTILITE PANELS	PER STR'L
B	5	108" x 132"	14GA EG STEEL WALL	3" (R-21) POLYURETHANE FOAM	.040 UTILITE PANELS	PER STR'L
C	3	84" x 132"	14GA EG STEEL WALL	3" (R-21) POLYURETHANE FOAM	.040 UTILITE PANELS	PER STR'L
D	2	60" x 132"	14GA EG STEEL WALL	3" (R-21) POLYURETHANE FOAM	.040 UTILITE PANELS	
E	3	PER STR'L	TRACK & STUD	3" (R-21) POLYURETHANE FOAM	.040 UTILITE PANELS	
F	3	48" x 132"	14GA EG STEEL WALL	3" (R-21) POLYURETHANE FOAM	.040 UTILITE PANELS	PER STR'L

FLOOR SCHEDULE						
TAG	QTY	SIZE	FLOOR TYPE	INSULATION	FINISH	NOTES
A	4	132" x 132"	3/16" STEEL PLATE	4" (R-28) POLYURETHANE FOAM	POLY	NON SLIP GRIT, NEW
B	4	108" x 132"	3/16" STEEL PLATE	4" (R-28) POLYURETHANE FOAM	POLY	NON SLIP GRIT, NEW

ROOF SCHEDULE						
TAG	QTY	SIZE	ROOF PANEL TYPE	INSULATION	INTERIOR PANELING	NOTES
A	10	132"x132"	14GA EG STEEL WALL	5" (R-35) POLYURETHANE FOAM	.040 UTILITE PANELS	
B	4	108"x132"	14GA EG STEEL WALL	5" (R-35) POLYURETHANE FOAM	.040 UTILITE PANELS	

**GENERAL NOTES**


1. SPRAYTITE 178 SPRAY FOAM APPLIED USING FLAME SEAL THERMAL BARRIER, APPLIED TO ALL FOAM SURFACES AT MINIMUM 25 WET MILS ON WALLS AND ROOF.
2. FLAME SEAL THERMAL BARRIER APPLIED AT MINIMUM 25 WET MILS TO STEEL FLOOR JOISTS AND UNDER SIDE OF FLOOR. SPRAYTITE 178 SPRAY FOAM APPLIED ON TOP OF THERMAL BARRIER.
3. SPRAYTITE 178 SPRAY FOAM COMPLIES WITH ICC-ES EVALUATION REPORT ESR-2642.
4. PROVIDE 1/2" CEMENT BOARD WITH 30 MILS POLYUREA COATING WHERE SHOWN.

FIXTURE SCHEDULE									
TAG	QTY	FIXTURE	DESCRIPTION	NOTES	TAG	QTY	FIXTURE	MFR / DESCRIPTION	NOTES
A	10	48" x 240"	AGRICULTURAL TABLE	-	AA	1	WATER PUMP	GOULDS GT07	2
B	2	GAVITA MASTER EL2	LIGHT CONTROLLER	-	BB	1	URINAL	KOHLER K-5016	2
C	38	GAVITA PRO 1000e DE US	GROWING LIGHTS	-	CC	4	SUMP PUMP	GOULDS GSP0311	
D	6	PHRESH FILTER	14" x 48" CARBON FILTER	-	DD	8	2" THICK FILTERS		
E	20	BOTANICARE 4' x 8'	OD BLACK TRAY	-					
F	10	BOTANICARE 4' x 4'	OD BLACK TRAY	-					
G	2	VORTEX POWER FAN	V-SERIES XL-14	1					
H	2	QUEST 205 DEHUMIDIFIER	205 Pints/Day	1					
I	2	GROW TABLES	XTREME / 5' x 19'	-					
J	4	DEHUMIDIFIER	QUEST / 225 DUAL	1	E1	1	ROTOVAP	5L-208-230/1PH/60HZ/50A	4
K	2	EXHAUST FAN	BROAN / 512M	1	E2	1	VACUUM OVEN	1.9 CF	44
L	2	LOCKERS	SALSBURY	-	E3	1	HOT PLATE STIRRER	THERMO SCIENTIFIC	4
M	1	HEAT PUMP	BARD	1, 3	E4	1	CRYOGENIC FREEZER	ACROSS INT. AI 18CU.FT.	4
N	1	WATER HEATER	CHRONOMITE / SR-33	1, 3	E5	1	MANTLE	LOB SOCIETY	4
O	2	WATER CLOSET	KOHLER / K-4325	2	E6	1	CRV 16		4
P	2	LAVATORY	KOHLER / K2005	2	E7	1	WATER PUMP	SOUS VIDE	4
Q	2	WALL MIRROR	TBD	2	E8	1	LS-CTK KIT	IP-60 AND IP-80	4
R	1	MOP SINK	FLORESTONE / MSR-2424	2	E9	1	HOMOGENIZER	CLS 5030	4
S	1	HAND SINK	ADVENCE TABCO / 7-PS-55	2	E10	1	OVERHEAD STIRRER	SCIOGEX	4
T	1	3 COMPARTMENT SINK	ADVANCE TABCO	2	E11	1	SLIDE WARMERS	PREMIER HX-2001	4
U	1	EMERGENCY EYEWASH SINK	GUARDIAN / G1814P	2					
V	1	WATER HEATER	STIBIEL ELTRON DHC 24 PLUS	2					
W	1	WATER FOUNTAIN	ELKAY	2					
X	3	FLOOR SINK	ZURN	2					
Y	4	250GAL TANKS	NORWESCO						

**NOTES:**

1. REFER TO MECHANICAL SHEETS M1.0 & M1.1 FOR MANUFACTURER, MODEL AND SPECIFICATIONS.
2. REFER TO PLUMBING SHEETS P1.0 AND P1.1 FOR MANUFACTURER, MODEL AND SPECIFICATIONS.
3. SEE ELECTRICAL SHEETS E1.0 FOR MANUFACTURER, MODEL AND SPECIFICATIONS.
4. MANUFACTURER, MODEL AND SPECIFICATIONS BY OTHERS.

REVISIONS			
REV #	DESCRIPTION	DATE	BY

<b>Xtreme Cubes Corporation</b> 8350 Eastgate Road, Henderson, Nevada 89015 Ph: 702.636.2969 Fax: 702.636.4943			
INITIALS	DATE	PROJECT	
DPT	01.11.19	<b>Iowa Relief</b>	
APPROVED	DESCRIPTION		
SCALE	N/A		
PROJECT #	19005		
 BY XTREME CUBES CORPORATION		SIZE	SHEET #
		<b>D</b>	<b>A1.0</b>

# Admin Unit (1 Pod)

2 10' x 24' Hallway Connecting Pods

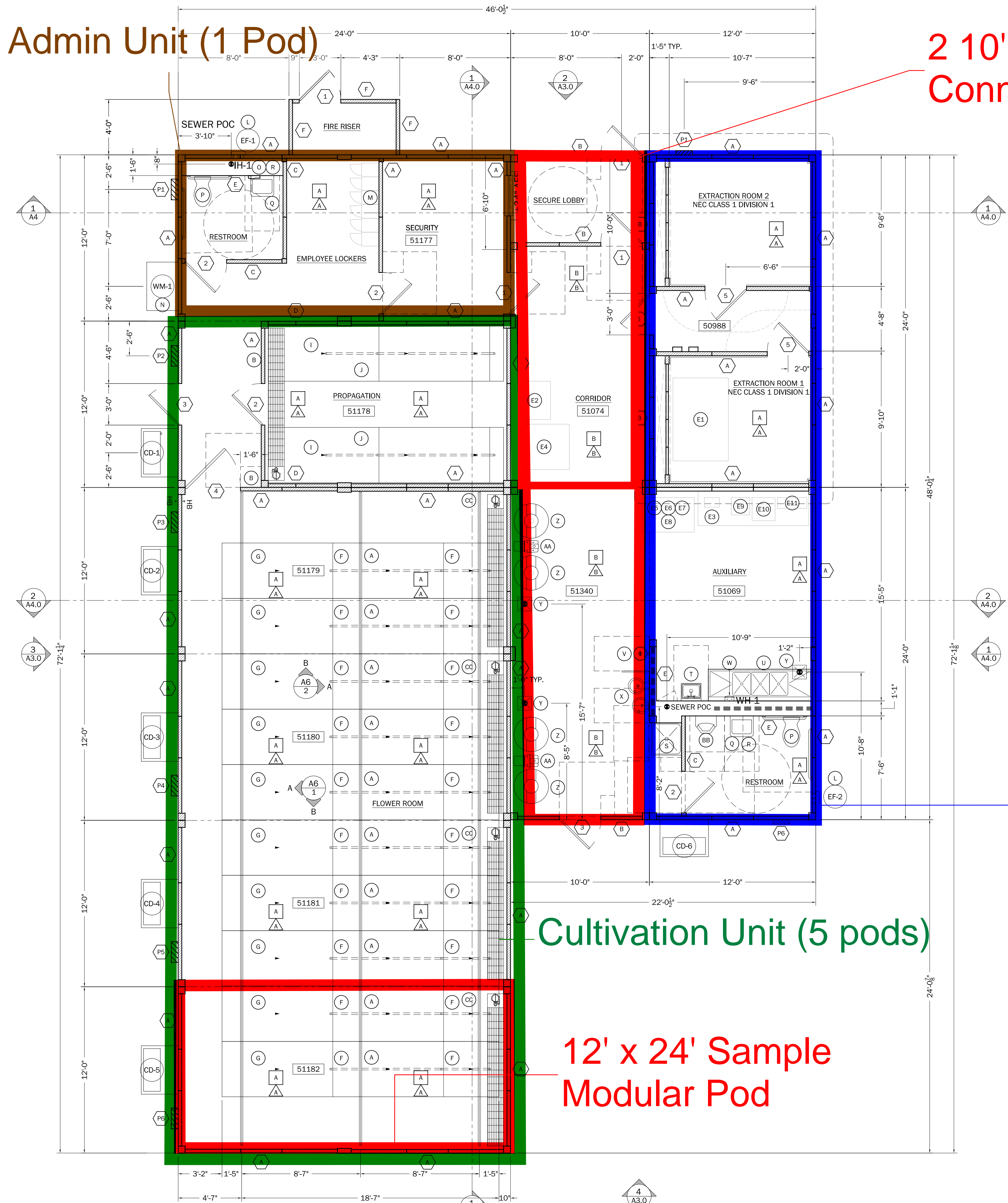
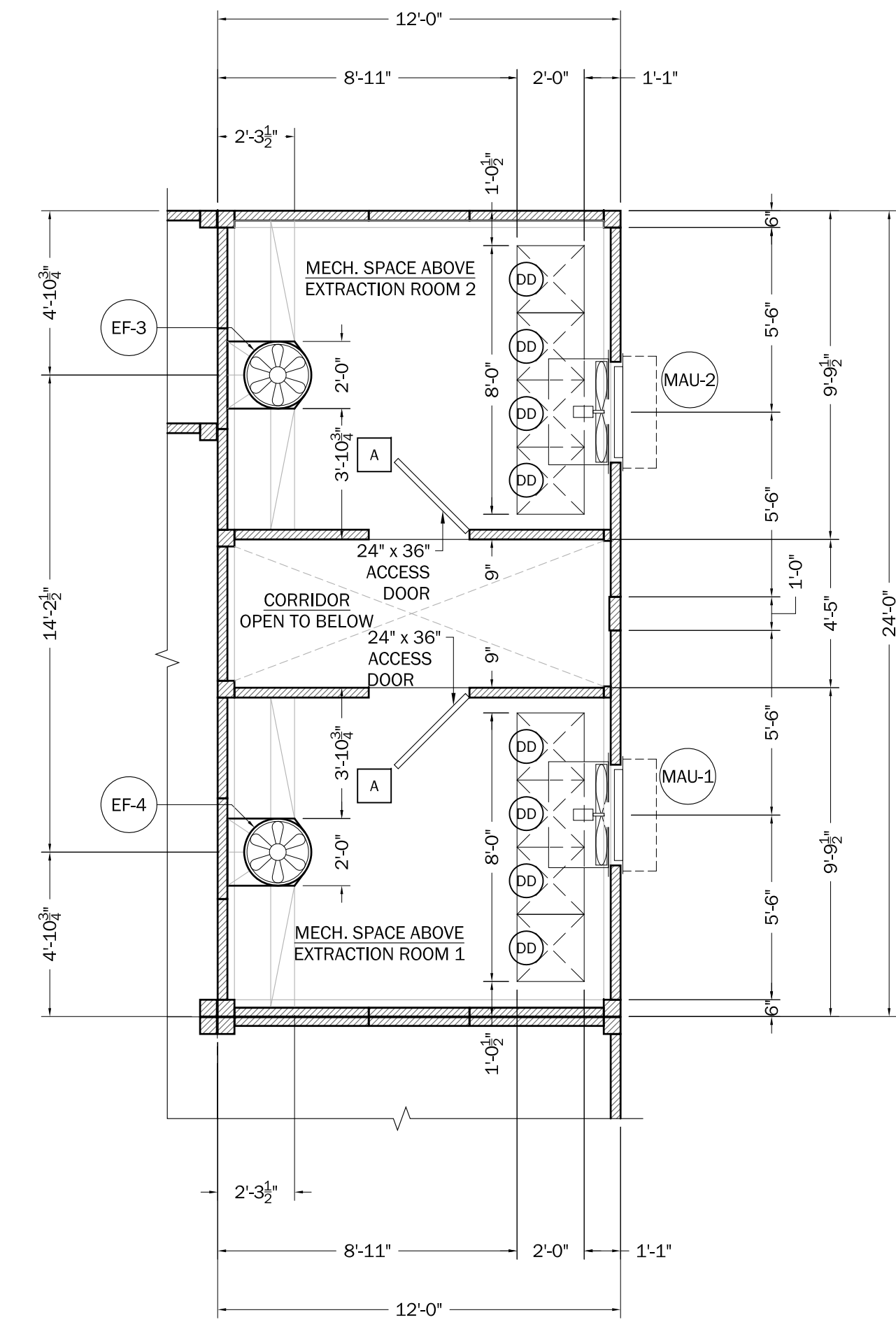
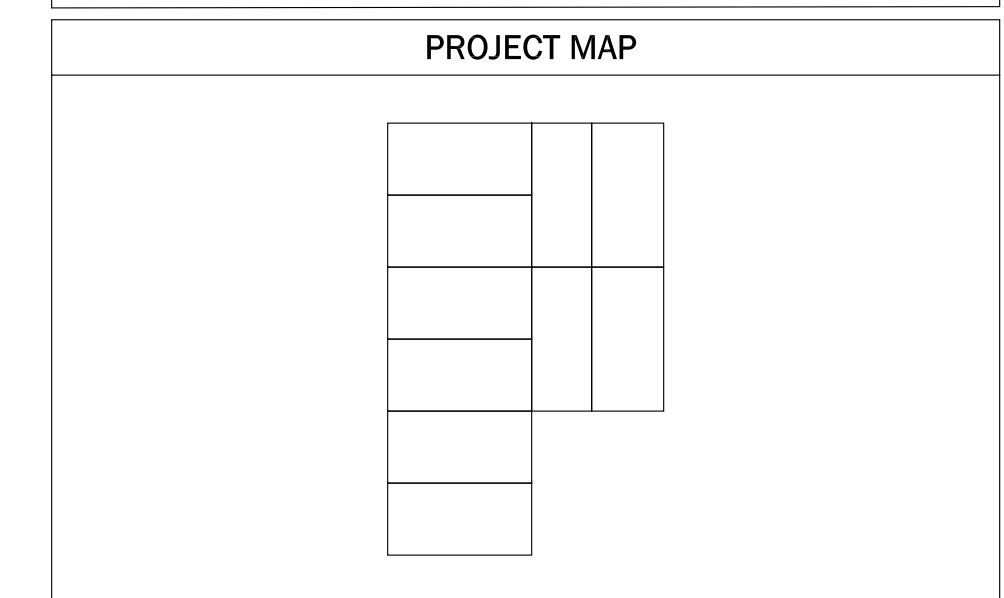
Processing Unit (2 Pods)

Cultivation Unit (5 pods)

12' x 24' Sample Modular Pod

REVISIONS			
REV #	DESCRIPTION	DATE	BY

WALL LEGEND	
	= 3' WALL INSULATED
	= 3' WALL NON INSULATED
	= 2' x 6" PLUMBING WALL INSULATED
	= NON FULL HEIGHT WALL
	= ARCHED OPENING, SEE INTERIOR ELEV. FOR DIMS
	= CEILING SOFFIT
	= VENEER-SEE ELEVATIONS
	= 1 HR. OCCUP. SEPARATION 1 LAYER OF 5/8" TYPE 'X' GYP. BD. ON ONE SIDE AND 5/8" GYP. BD. ON THE OCCUPANT SIDE.
	= 2x LOW WALL w/ RAILING
	= BALCONY LOW WALL @ 40" & HAND RAIL 36" A.F.F. TYP.
	= DRAFT STOPS AS REQUIRED, SEE CALC BELOW



1 DIMENSIONED FLOOR PLAN  
1/4" = 1'-0"

2 DIMENSIONED ATTIC SPACE  
1/4" = 1'-0"

<b>Xtreme Cubes Corporation</b> 8350 Eastgate Road, Henderson, Nevada 89015 Ph: 702.636.2969 Fax: 702.636.4943			
DRAWN BY	INITIALS	DATE	PROJECT
DPT	DPT	01.11.19	Iowa Relief
APPROVED	DESCRIPTION		
SCALE	Architectural Schedules And Notes		
PROJECT #	19005		
		SIZE	SHEET #
		D	A1.1